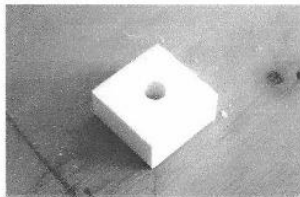


Installation Instructions--page 1

A few notes and safety items before getting started

- 1) Some cabinets are made with solid tops, but many manufactured cabinets are left open and have no tops. In either case, your rough top plywood will be attached over the top of your cabinets. If you will need to seam your rough top plywood and you have open top cabinets, do not place seams near the sink area as this will decrease the support strength of the plywood.
- 2) We provide 1/2" thick spacer blocks that may be installed with the sink bracket when additional space is needed for the sink. Depending on the thickness of the rough top and sink rim, one or two spacers may be used. Solid top cabinets may not require the use of the spacer due to the added material thickness of the cabinet top, although spacers may be used if desired.
(See photos below)



1/2" spacer



Open top with spacer

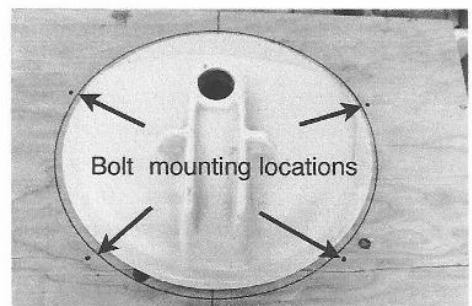


Solid top without spacer

- 3) Our sink mounting system is designed for oval sinks, but will also work with rectangular sinks if space is allowed for in the cabinet width. In order for the sink mount supports to work properly with rectangular sinks, the interior clear width between cabinets walls must be a minimum of 3" larger than the outside width dimensions of the sink.
- 4) Our mounting system is designed for installations when the combined weight of the sink and its contents do not exceed 50 pounds.
- 5) **Small parts and packaging are choking hazards to children.** Keep away from children.

Mark and cut sink hole

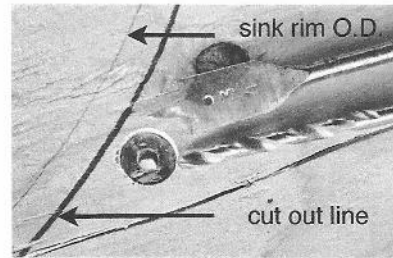
- 1) Mark the center of your sink on the rough top plywood.
- 2) Determine the proper sink placement by using the manufacturer template or by placing the sink upside down on the rough top surface. Positioning will vary depending on your cabinet size, construction and finish counter overhang. Mark your cut out hole 1/2" larger than the outside dimension of the sink.
- 3) Cut out sink hole.
Note: If your cabinets have solid tops, you will cut your sink hole and drill mounting holes through the rough top and the cabinet top.



Installation Instructions--page 2

Install Mounting bolts

- 1) For oval sinks, mark four holes diagonally on the plywood rough top. Rectangular sinks will require two holes along the width of each side. The manufacturer template will be marked with suggested bolt mounting locations.
- 2) At bolt mounting location, measure out 1/2" from the sink cut out line and mark center point of mounting hole. Repeat marking procedure for all four mounting locations.
- 3) With a 3/4" paddle bit, drill 1/8" into the rough top surface at all four mounting locations.
- 4) With a 1/4" bit, drill holes for mounting bolts at all four mounting locations.
- 5) Place mounting bolts into 1/4" hole and pound down into the 1/8" recess. The top of the bolt should be flush with or slightly below the rough top surface.
Tip: Placing another hammer tightly against the bottom of the rough top will provide added support when pounding down and setting the mounting bolts



Counter sink and drill holes

Final Instruction

- 1) From the underside of the rough top, secure the support bracket and possible spacer blocks by placing them onto the mounting bolt and connecting with 1/4" washer and 1/4" wing nut.
- 2) Run the 1/4"x 2" sink adjustment screw into the threaded hole of the support bracket.
- 3) Place rubber screw cap on the 1/4" adjustment screw.
- 4) Place the sink on the four adjustment screws with rubber caps and install your countertop. The sink rim should be lower than the rough top surface. If it is not, lower the adjustment screws or add a spacer block to each mounting bracket location.
- 5) After the countertop is installed, adjust the mounting brackets and center the sink with the finish sink cut out of your counter material.
- 6) Apply a bead of caulking to the top of the sink rim.
- 7) Press sink up to the bottom of the new counter material and secure by raising the sink adjustment screws. Do not over tighten the adjustment screws as damage may occur to the sink or counter material.
- 8) Finish with a bead of caulking around interior of sink and allow to dry before installing fixtures and drain.

